



LRI MS Connection

WP4 AUTHENTICATION SYSTEM Preliminary Results

Components

Identity Provider



LRI (User Interface & Auth Verification)

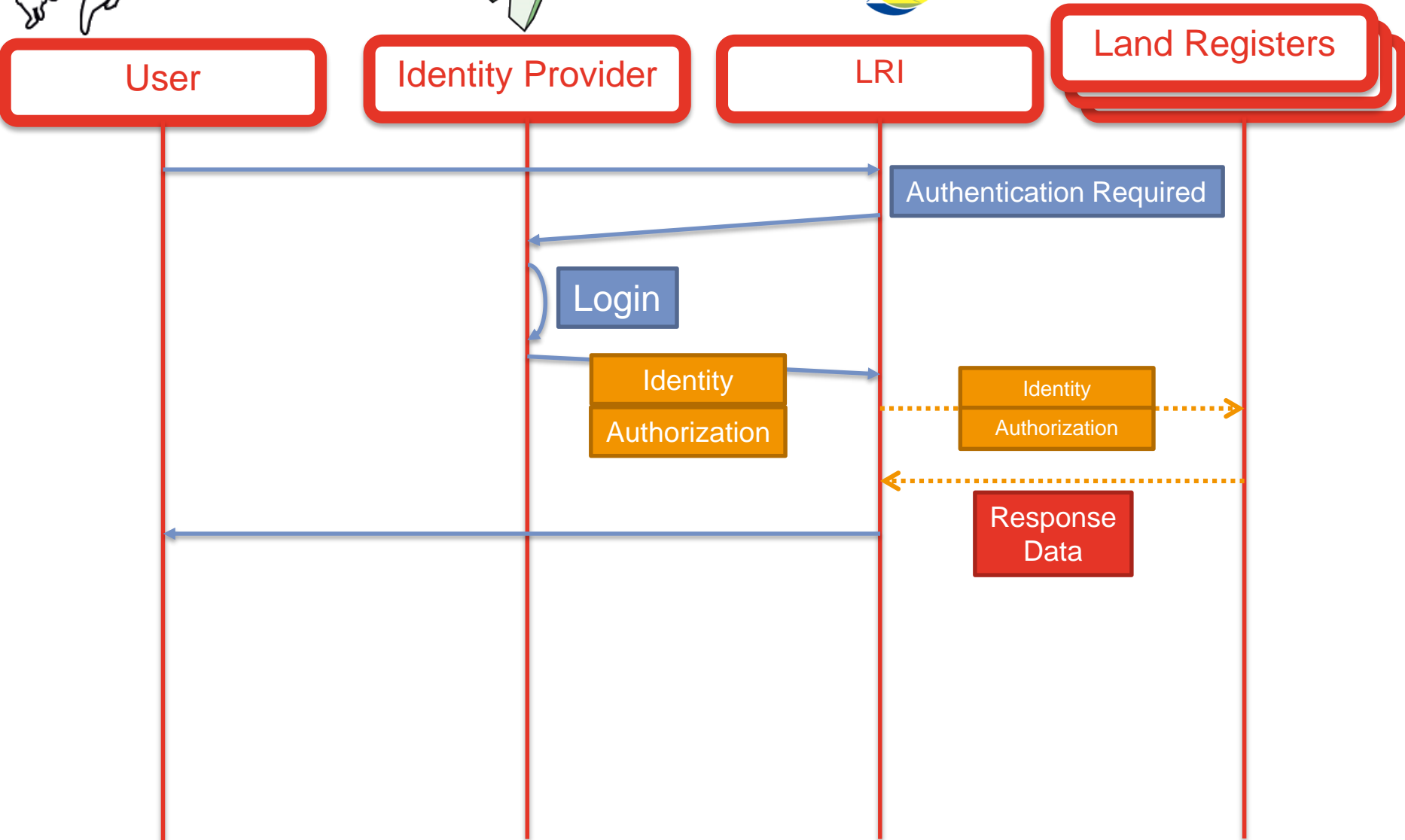
LRI



Service Layer (national Land Register)



Scenario 1: 1 Step Identification & Authorisation



Scenario 2 – 2 Step Identification & Authorisation



User

Identity Provider

LRI

Land Registers

Authorisation-Service

Authentication Required

Login

Identity

Identity

Authorization

Identity
Authorization

Response
Data

LRI Role Description (still under discussion!)

Role	Description
Anonymous	Any non identified user can access public functionality of national Land Registers via LRI – as long as he pays the fees for the documents requested.
Private User	Authenticated (eID) private users who represent themselves. In some LR's they have more rights (e.g. in EE): “query my own properties”
Company User	Authenticated Company Users who represent a company or any other private organization. Could use own Identity Provider. Primary difference: typically deferred (monthly) payment by their company.
Legal Professional	Authenticated Legal Professionals are a subset of professionals (e.g. notaries, lawyers) that have specific rights in the access of Land Registers – in the context of a specific case they are working on. They can search by person name or by company name.
Public Official	Authenticated Public Officials who have full access to all LRI functionality including privileged queries (and sometimes also access to internal documents)

Roles to rights for using specific functions of the AT Land Register

Search by	Anonymous	Private User	Company User	Legal Professional	Public Official
Address or legal entity or parcel nr.	YES	YES	YES	YES	YES
Document-ID	YES	YES	YES	YES	YES
Person Name or Company Name	NO	NO	NO	YES	YES